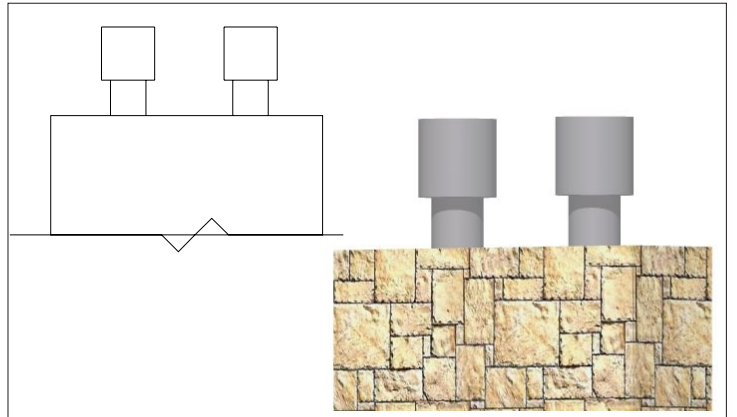


OUBAAI COWLS

6 December 2005

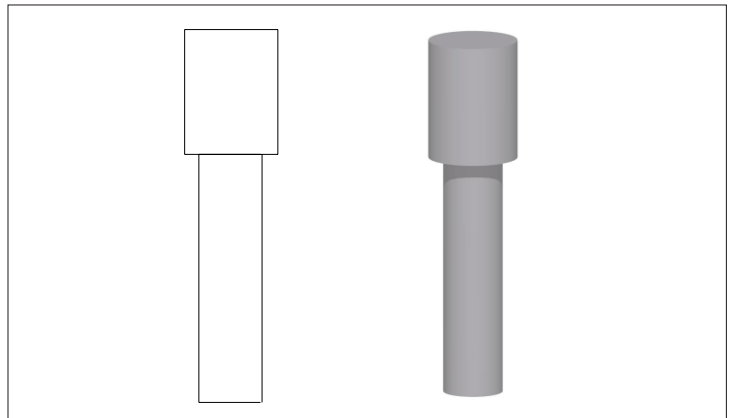
TYPE A

- Stainless Steel cowls as per Oubaa Village.
- Sizes vary according to flue size.



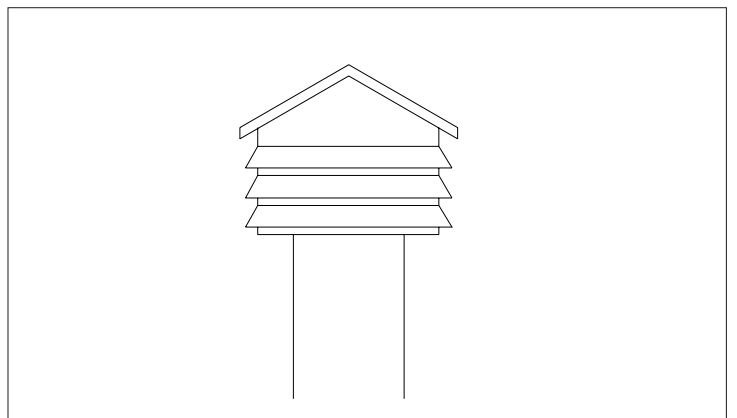
TYPE B

- Stainless Steel or Galvanised gas flues, according to suppliers details.



TYPE C

- Turbo Cowl (Classic Fires) in Stainless Steel or 3CR12 painted black.
- Sizes vary according to flue size.



TYPE D

- Simple Galvanised plate mounted above flue and painted black.

